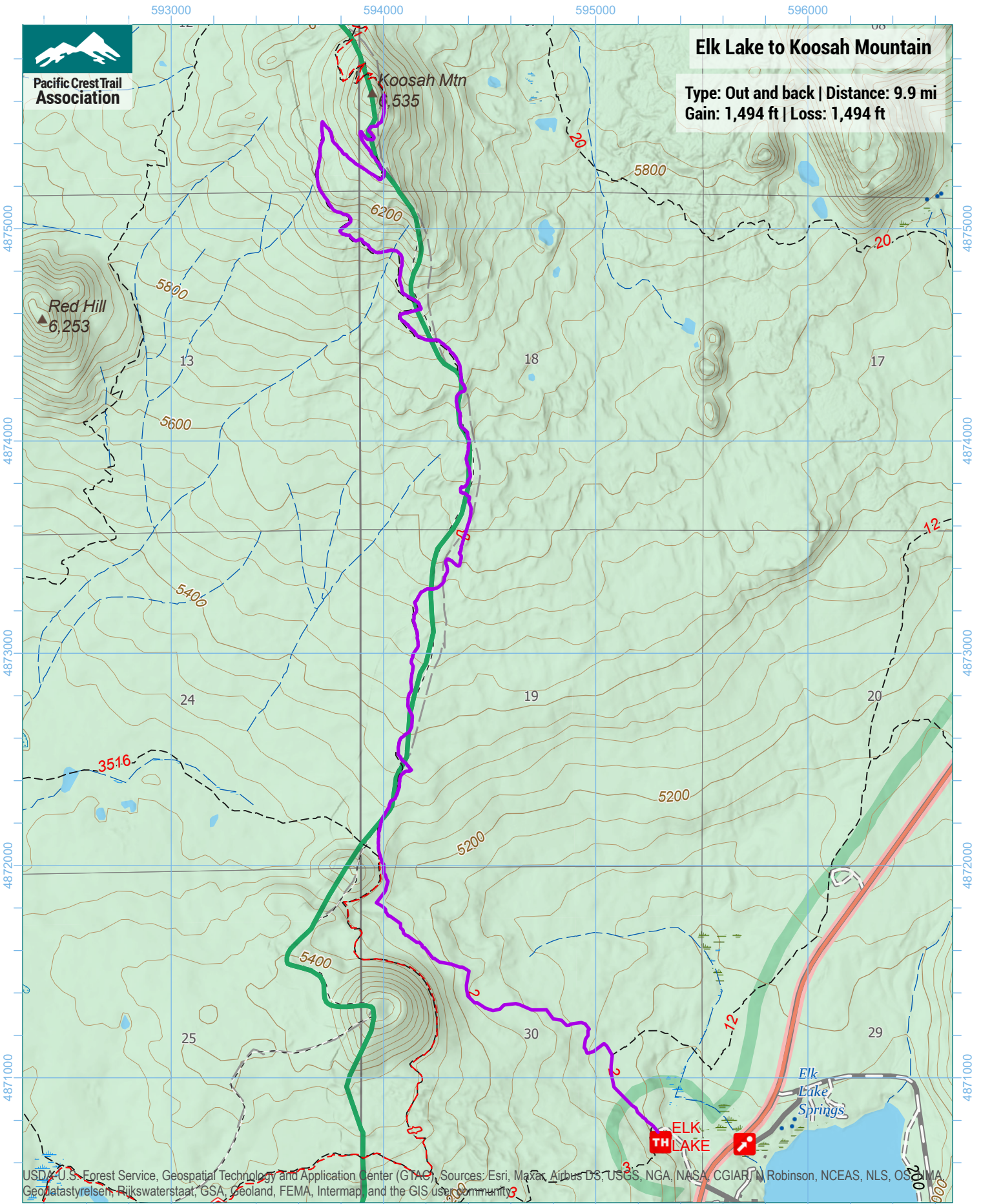




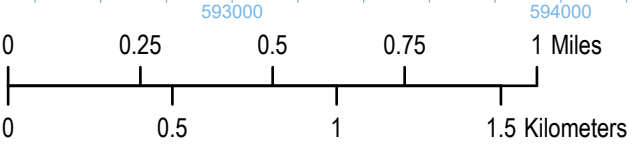
Pacific Crest Trail Association

Elk Lake to Koosah Mountain

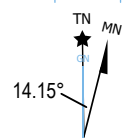
Type: Out and back | Distance: 9.9 mi
Gain: 1,494 ft | Loss: 1,494 ft



USDA U.S. Forest Service, Geospatial Technology and Application Center (GTAC), Sources: Esri, Maxar, Airbus DS, USGS, NGA, NASA, CGIAR, Robinson, NCEAS, NLS, OS, NIMA, Geodatastyrelsen, Rijkswaterstaat, GSA, Geoland, FEMA, Intermap and the GIS user community



1 inch equals 1,917 feet
1:23,000
WGS 1984 UTM Zone 10N



Trip data by PCTA
Basemap by US Forest Service
Contour interval: 40ft